



ABOUT US



we fit everything
we manufacture



we travel to all
points of the
compass



South East Conveyors was formed in 2000 by current sole director Dylan Watson, from humble beginnings and a few employees the company has grown to a major engineering, conveying and project management business employing over 50 full time plus casual highly qualified staff, servicing a variety of sectors both locally and nation wide.

South East Conveyors and Engineering pride themselves on quality workmanship that is done safely, on time and in budget with customer satisfaction paramount. With fully equipped engineering, belting and machine workshops and a full fleet of vehicles, trucks and trade trailers, we are committed to providing the highest level of service both locally and nation wide. In addition we supply a full range of conveyor componentry, conveyor belting and wear panels.

Following targeted recruiting, we now have design and drafting capabilities, supported by our project managers. Design and drafting of conveyor systems, associated components for whatever the project requires is all done to Australian Standards. Our labour resources include belt splicer's, boiler makers, fitters, engineer's, draftsmen, sheet metal workers and a dedicated health and safety officer.

South East Conveyors and Engineering is a rapidly expanding company that is fully committed to supplying only the best products and service possible, we are committed to workplace safety and environmental impact as demonstrated through our increasingly robust Health, Safety & Environment Management System. We are also working towards our ISO 9001 accreditation.

Our head office is located in Mount Gambier with a fully equipped machine shop, large metal fabrication workshop and specialised conveyor belt facility.

We also have our Adelaide branch to compliment our site services in Port Pirie, Townsville and Western Australia.

Our specialty is that we fit everything we sell or manufacture, whilst providing ongoing maintenance services once installed, including preventative maintenance checks and schedules for wear management on belt scrapers, idlers, pulleys and chutes.

We specialise in shutdowns on both conveyor and pump maintenance providing detailed reports and preventative measures.

SAFETY

SAFETY MANTRA

- Work must be planned to be done safely
- Working safely is a condition of employment
- Employee involvement is essential
- Management is accountable for safety performance
- All incidents are preventable
- Training employees to work safely is essential
- All operating exposure can be safe-guarded
- An incident free workplace is a good business

With safety being a core requirement for businesses, we ensure that all staff are educated and trained in the requirements to ensure a safe work place.

South-East Conveyors Pty Ltd (SEC&E) is a company that provides engineering and conveyor maintenance services and has health, safety and the environment as one of its core values. We believe that health, safety and environment-related (HSE) incidents are preventable and that achieving safety excellence through strong HSE leadership and

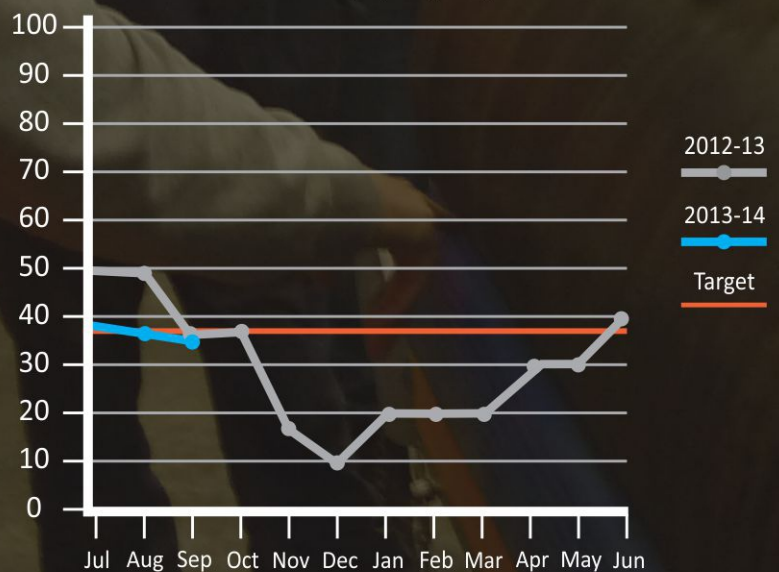
continuous improvement is fundamental to our business success.

South East Conveyors & Engineering works within the framework of safety standard AS4801.2001 and aims for best practice for the implementation of our business policies and procedures.

South East Conveyors & Engineering is proudly a member of the Safety Institute of Australia.

TRIFR 12mma

Total Recordable Injury Frequency Rate



Uncontrolled Copy When Printed

HSE Management System
 Part A – Commitment & Policy
 HSE Document No 1.1

Health, Safety & Environment Management Policy

South-East Conveyors Pty Ltd (SEC&E) is a company that provides engineering and conveyor maintenance services and has health, safety and the environment as one of its core values. We believe that health, safety and environment-related (HSE) incidents are preventable and that achieving safety excellence through strong HSE leadership and continuous improvement is fundamental to our business success.

This policy aims to provide a system for identifying and controlling workplace hazards and providing safe systems of work.

To implement this policy SEC&E will:

- Identify and comply with applicable safety and environmental legislation, Australian Standards, Codes of Practice, industry guidelines and internal company performance requirements.
- Uphold our duty of care to provide a safe, healthy and environmentally-friendly workplace by using a risk-based approach for managing our workplace risks and so to ensure that the risk of incident is either eliminated or reduced to as low as reasonably practicable.
- Communicate and consult with employees and their representatives on relevant HSE matters, including providing all employees and contractors with the information and training required to perform their work safely and understand their environmental responsibilities.
- Plan implementation of suitable HSE strategies, procedures and programs which include goals and objectives which are specific, measurable, attainable, realistic and time-based and establish key performance indicators.
- Monitor our HSE performance using lead and lag key performance indicators, address non-conformances and strive for continuous improvement using all necessary internal and / or external resources and report on our performance.
- As a condition of employment, every employee and contractor understands their HSE rights and obligations and accepts responsibility and accountability for working in a safe way and without damaging the environment according to the requirements of SEC&E's HSE Management System. Where relevant, HSE accountability is included in the position description.
- Support the principles of sustainable development and foster a pollution-prevention ethic by promoting environmentally-sound practices such as recycling.

SEC&E will allocate resources in fulfilment of this policy and communicate this policy to our employees and the public. We expect our management, employees and contractors to ensure that HSE is part of the way we do business each day and to support the growth of a risk-aware culture at all levels of our organisation.

Employees are required to:

- Ensure their own health and safety and the health and safety of others by being in a state fit for work.
- Follow correct procedures and lawful instructions to maintain their health and safety at work.
- Report safety and environmental incidents including near-misses.

Dylan Watson
Managing Director

Date: May 2011

Version	Prepared By:	Reviewed By:	Tech / Eng Review By:	Approved By:	Document Owner:	Approval Date:	Next Review:
1	C Peters (CHM)			D Watson	HSE	May 2011	May 2014

Shared Drive \S\SEC&E HEALTH & SAFETY MANAGEMENT SYSTEM1 - Policies Page 1 of 1



CONVEYORS



Conveyor systems are South East Conveyors and Engineering's core business, which they have built a reputation as being industry leaders and one of the largest conveyor companies in South Australia.

conveyor systems for a variety of industries from mining, forestry, recycling, grain, glass, viticulture, food processing and abattoirs. Also offering complete conveyor maintenance to ensure your plant runs correctly.

Our professional team is able to design, manufacture and install

full conveyor
design and
manufacture

SERVICES WE PROVIDE INCLUDE

- Full conveyor design and manufacture
- Conveyor componentry supply
- Conveyor belt supply
- Skirt replacement and adjustment
- Conveyor roller and frame replacements
- Conveyor pulley manufacture and repairs
- Hot and cold belt splicing
- Scraper installation and service
- Ultra sonic testing of belts, pulleys, rubber and steel
- Thermal Imaging
- Detailed inspections and reporting
- Scheduled conveyor maintenance
- Rubber lining
- Rubber and ceramic lagging
- 24 hour break down service



detailed
inspections
and reporting





ENGINEERING



With a team of qualified trades people South East Conveyors and Engineering can offer a diverse range of experience in all areas, specialising in design, drafting, installation and project management. We have a specialised machine shop with CNC capabilities to complement our

engineering, design and drafting division.

We can service projects nation wide, also providing 24 hour support and service in break down situations.

design, drafting,
manufacturing
and installation

WE SPECIALISE IN MILD FABRICATION OF



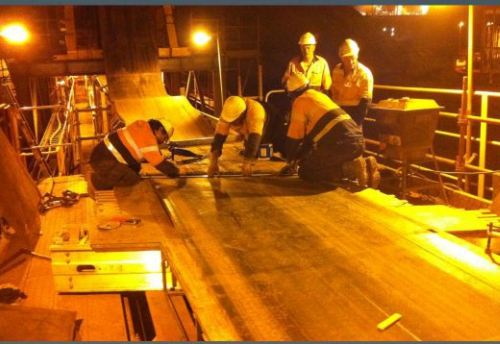
full CNC
machine shop



- Mild Steel
- Aluminium
- Stainless Steel
- Cast Iron and other exotic materials
- Structural
- Chutes/Hoppers
- Walkways/Platforms
- Belt Winders
- Conveyors
- Pulleys
- Tanks
- Truck trailer repairs
- Ute trailer manufacture



MINING



With project managers, planners, draftsman, engineers, engineering and belting workshops and a large qualified work force with mobilisation nation wide. South East Conveyors and Engineering are ideally situated to service all scheduled maintenance, shutdowns, design, drafting and

commissioning of plant and equipment and manufacturing, supply and installation of conveyor componentry, with full inspection reports and corrective recommendations to improve your plant.

shutdown
management

THE COMPLETE PACKAGE

- Specialised machining and engineering services
- Shutdown management - Planning, supervision and labour resources
 - Full conveyor design and manufacture
 - Supply chain management
 - Pump maintenance
- Manufacture and installation of conveyor componentry
 - Conveyor belt supply
 - Skirt replacement and adjustment
 - Conveyor roller and frame replacements
- Conveyor pulley manufacture and repairs
 - Hot and cold belt splicing
 - Scraper installation and service
- Ultra sonic testing and thermal imaging of belts, pulleys, rubber, steel and componentry
 - Detailed inspections and reporting
 - Scheduled conveyor maintenance
- Rubber wear and ceramic lining specialists
- On site containers and mobile tool trailers
 - 24 hour break down service



full chain
management





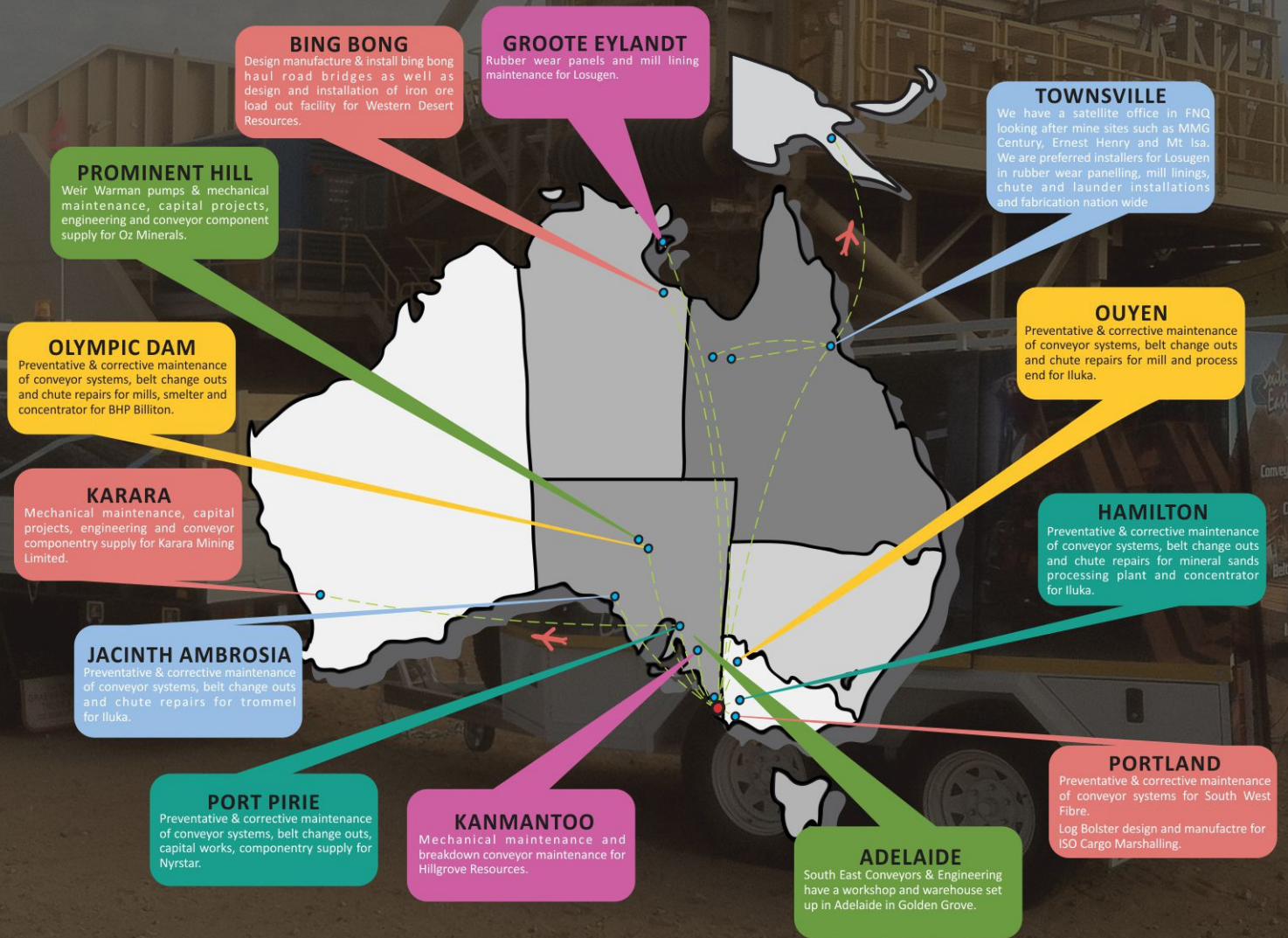
TRAVEL

South East Conveyors & Engineering take part in pump and conveyor preventative and corrective maintenance work nation wide. With mobile tool trailers to reach remote destinations and fully equipped on site containers backed up by highly qualified

tradesmen, we have the knowledge and expertise to keep your plant safe and reliable.

Travel is not an issue with South East Conveyors & Engineering, with our head offices located in Mount Gambier backed up with satellite offices in Adelaide, Karara

and Townsville, we can easily mobilise our work crews nation wide.



TRULY A NATION WIDE COMPANY



TESTIMONIAL



Brenton Sieber,

Although I am aware of your value to our business, I think it worthy that I pick out a couple of recent events to highlight and show appreciation to your efforts.

I talk of the recent 19 conveyor failure which we clipped the belt to help us get through to stop day and the more recent 57 conveyor which we changed for a clipped belt.

The stats,

26/04/2012 - 57 belt was changed in 2hrs, this is approx. 6hrs faster than the previous estimated time for Nyrstar personnel to change. Our site equation puts this at approx. \$96k production saving.

11/04/2012 – 19 Conveyor clips was completed in 45min which is approx. 2hrs faster than previous estimates for Nyrstar Personnel to complete. Our site equation puts this at approx. \$32k production saving.

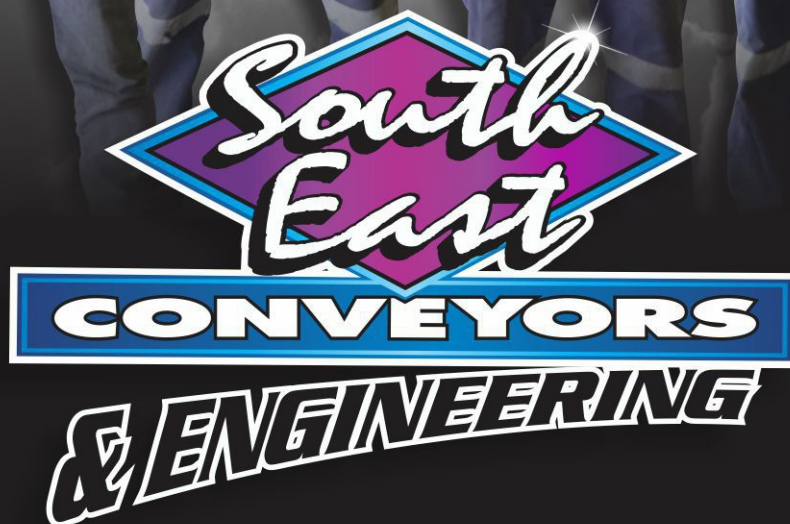
I am aware that the work you are doing outside of the repair work is also benefiting us greatly but I thought these 2 examples noteworthy and an excellent example of your value to the company.

Thank you and your team and keep up the good work!!!!!!

Brendon Rieck
Asset Management Superintendent - Lead
Nyrstar
Ellen Street, Port Pirie, South Australia 5540
T + 61 8 8638 1695
M +61 409 238 789

brendon.riek@nyrstar.com
www.nyrstar.com

S O U T H E A S T CONVEYORS AND ENGINEERING



299 Commercial Street West, Mount Gambier SA 5290

Phone > 08 8723 3333 Fax > 08 8723 3336

www.seconveyors.com.au

